

Updated Western Cape Displaced People Report

13 August 2008

Summary of data collected by TAC ALP & Civil society

This third report in the series details the follow-up data collected subsequent to the previous reports on the data as at 14 and 24 July and serves to highlight recent changes in the living circumstances of the displaced people.



Treatment Action Campaign National Office:

3rd Floor Westminster Building, 122 Longmarket Street, Cape Town,
Tel: 021 422 1700 Fax: 021 422 1720
Email: info@tac.org.za Website: www.tac.org.za

TABLE OF CONTENTS

EXECUTIVE SUMMARY	5
RECOMMENDATIONS	7
INTRODUCTION.....	9
LIMITATIONS AND THEIR IMPLICATIONS	9
OCCUPANCY.....	10
Table 1.1a Total occupancy for all sites on the 13 th of August.....	10
Figure 1 Changes in total population and population by sex housed at the 95 sites evaluated over time since the previous report	10
Figure 2 Population of exceptionally vulnerable persons housed in the 95 evaluated sites over time.....	11
Number of Departures and Arrivals at Most Recent Follow-up (Tables 1.2, 1.2a and 1.2b)	11
FOOD.....	13
Food Provision Distribution Information Derived From Follow-up (Table 1.3a).....	13
SANITATION	13
Sanitation Information Derived from Follow-up (Table 1.4a).....	13
SHELTER	13
Shelter information derived from Follow-up (Table 1.5a)	13
HEALTH	14
Health Services from Follow-up (Table 1.6a)	14
NON FOOD ITEMS, EDUCATION AND SERVICES	14
Disposable Nappies, Sanitary Towels, Education and Other Services from Follow-up (Table 1.7)	14
INDIVIDUAL SITE CONDITIONS FOR CAMPS.....	16
<i>BLUE WATERS</i>	
Health	16
Food.....	16
Shelter	16
Sanitation	16
Communication	17
<i>HARMONY PARK</i>	
Health.....	18
Food.....	18
Shelter	18
Sanitation	18
Communication	18
<i>YOUNGSFIELD</i>	
Health.....	19
Food.....	19
Shelter	19
Sanitation	19
Communication	20
ACKNOWLEDGMENTS.....	21

APPENDIX 1 TABULATIONS OF THE FOLLOW-UP DATA ACCORDING TO SITE 22

Table 1.1 Demographics 22

Table 1.2 Demographic change at most recent follow-up 26

Table 1.2a Departures and their destinations 28

Table 1.3a Food Provision – Follow-up baseline 32

Table 1.4a Sanitation – Follow-up baseline 35

Table 1.5a Shelter conditions – Follow-up baseline 37

Table 1.6a Health – Follow-up baseline 39

Table 1.7b Non Food Items and Other Services – Baseline Follow-up 41

EXECUTIVE SUMMARY

1. Four camps and 36 sites were assessed since the last report of the 24th of July.
2. The total number of IDPs has declined from 5077 to 4361 since the last report and there were no significant changes in the demographic of the population except that the number of school-aged children has increased, as has the number of IDPs working.
3. There were 52 new arrivals.
4. There were 291 new departures. Documentation of the number of arrivals and departures was still erratic given the sensitivity of the closure of camps and sites to new IDPs and the difficulties of reintegration. The majority of the departures documented were going to their community of origin.
5. Food is still largely deemed insufficient and regular provision is required especially where TAC has previously been providing food. Two of these sites now have a regular food provider designated.
6. Norms and standards for sanitation are still not being met at a number of sites. The number of toilets and washing facilities, gendering of these facilities and frequency of cleaning needs to be addressed at many sites. While the ratio of people to sanitation facilities is edging down, this is a reflection of declining numbers rather than an actual improvement in the provision of these facilities.
7. While shelter conditions at a number of sites have been deemed to improve, conditions, especially at the large camps, remain poor. Tents leak and additional mattresses and blankets are required. Lighting has improved at a greater number of sites than where lighting has deteriorated, but additional lighting is still required to improve safety of IDPs. Security has improved at a number of sites but still is not comprehensive enough.
8. Transport to and from the nearest health care facilities has improved at a number of sites but is still lacking at many sites. First aid kits are still required at Harmony Park, in addition to 15 other sites. Health workers are required at the large camps for longer hours each day, and access to health care at night is especially poor.
9. Provision of non-food items has also shown improvement in some sites but deterioration at others. Non-food items such as nappies and sanitary pads are still either lacking or insufficient at many sites, as are services and access to education and childcare.

RECOMMENDATIONS

Based on the issues identified above, TAC and ALP recommends that Government:

1. Ensure that where improvements in living conditions in the sites have occurred that these be maintained, and where circumstances remain poor or have deteriorated that these be addressed urgently.
2. Specifically, improved food quality and regularity of provision is required at most sites; especially where the TAC was previously listed as a food provider, since the TAC no longer has funds to continue food provision, government is urgently required to assist.
3. Sanitation norms and standards need to be met at a number of sites and camps. As was recommended in the previous report, more washing facilities are needed at Youngsfield as there is only one washing facility per 100 persons, also the number of toilets at Zolani Centre and Tableview Liebrandt van Niekerk Hall are insufficient. In addition, gendering of facilities and frequency of cleaning needs to be addressed at many sites.
4. Health care needs to be improved at Tableview Liebrandt van Niekerk Hall, transport to clinics resumed at Khayelitsha Site B Community Hall, and first aid kits delivered to Harmony Park, and 15 other sites.
5. Shelter conditions still require attention: at Blue Waters, Harmony and Soetwater tents leak, Daroo Islam Mosque and Bonne Esperance Shelter for Refugee Women and Children need mattresses and blankets (they currently have none), and 11 sites, including Youngsfield and Blue Waters need lighting in the female toilets and baths.
6. Although it has been addressed in the previous two reports, we continue to emphasize the need for the provision of non-food items, especially nappies for children and sanitary towels for women at many sites.
7. Access to education for children is urgently required at Bonne Esperance Shelter for Refugee Women and Children, Harmony, Muizenberg Office, Parow Methodist Church, Sereta Sports Centre, as well as recreational facilities, as are services such as advice centres, legal assistance, and regular information dissemination for adults.
8. While the assessment of 32 of the active sites is discussed here, previously assessed sites such as Summer Greens, Richwood, Foreshore, Bothasig Hall and Goodwood Presbyterian Church should not be ignored with respect to requirements to meet basic norms and standards for IDPs.

Western Cape Displaced People Report Updated Data 13 August 2008

REPORT COMMISSIONED BY TAC & ALP

SPONSORED BY OXFAM

INTRODUCTION

This report, the third in the series, details the follow-up data as at 13 August collected in the three weeks since the previous report dated 24 July. That report detailed new data collected in the 10 days since the first report dated 14 July was compiled.

The data presented in this report reflect the most recent data on occupancy for 79 sites, while new data on movement of IDPs and living conditions was collected for only 40 of these sites (five camps and 36 sites - these are listed with assessment date in Table 1.1 of the appendix and the older data are grayed out).

These most recent data show that on 13 August, of the 95 sites that at some time housed IDPs only 42 were still operational (the remaining 53 now did not house any IDPs).

The table numbering used in the previous reports has again been maintained to enable easier comparison of the data across reports.

These data are once again shown in tabulated form according to site in the appendix. For tables 1.3a onwards the data for sites that have become unoccupied during the assessment period are shown shaded in green at the bottom of each table. These data are however not discussed since these sites are now inactive. Of the 42 sites that remain operational, 32 are discussed directly in this report.

LIMITATIONS AND THEIR IMPLICATIONS

Assessment of numbers of persons and conditions at these camps is difficult since the sites are distributed over a large area of the Western Cape, the extreme mobility of the population being studied, the sensitivity of some of the questions being asked and in some cases poor access to information (provided by camp managers rather than assessed by site assessors). These data are the best data that we have but should be interpreted with the above caveats in mind.

OCCUPANCY

On the 13th of August the occupancy of the 42 sites still housing IDPs was as follows (shown in Table 1.1a):

Table 1.1a Total occupancy for all sites on the 13th of August

	13 August
Total occupancy :	4361
Total male :	2698
Total female :	1003
Total working :	254
Total pregnant women (7 months +) :	17
Total babies (< 1 year old)	122
Total children under 5 years :	307
Total children school going age :	258
Total people on chronic medication :	22

There has been a considerable decrease in the total population of displaced people from 5062 on the 24th of July to 4361 on the 13th of August, while the ratio of males to females has remained relatively constant at 2.7 to 1 (shown in Figure 1).

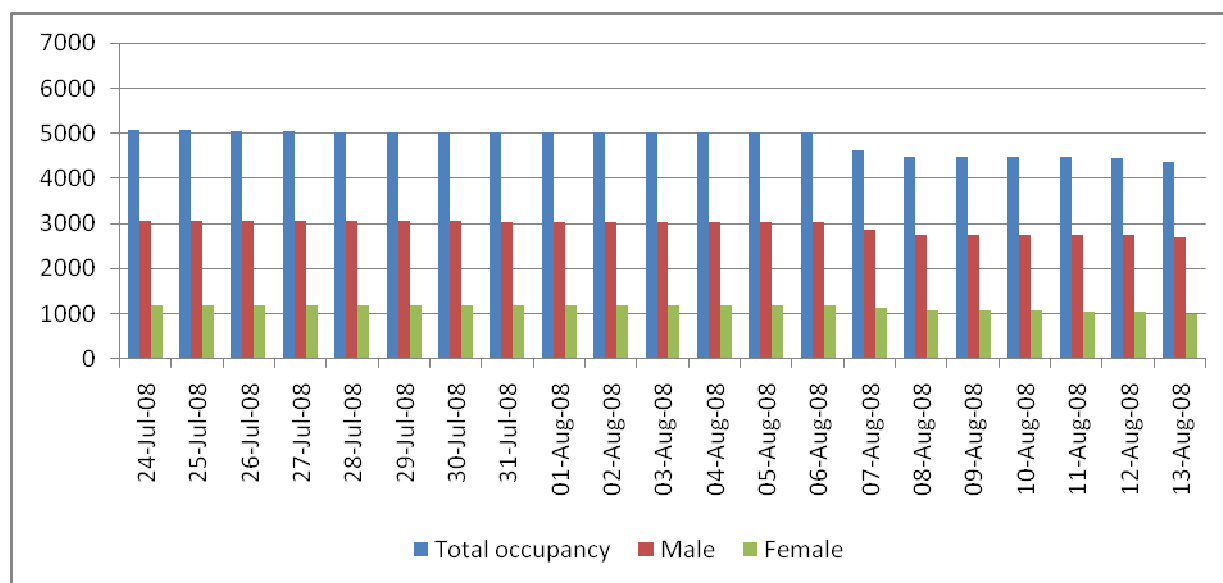


Figure 1 Changes in total population and population by sex housed at the 95 sites evaluated over time since the previous report

The numbers of the following demographic groups has decreased slightly; number of males, number of females, number of pregnant women and babies and number of children aged less than 5 years. The number of IDPs on chronic medication has declined by more than half. In contrast, the number of persons working has increased by about a fifth and the number of children of school going age by about a third.

While the numbers of IDPs in the five main camps continue to decrease, the largest proportion of IDPs is still housed in these camps that now have a total population of 2286 people. Many of the smaller sites also show declines in numbers, with some no longer housing IDPs. A notable exception is the Solomon Mahlangu site, which has increased from 86 people in July to 211 at the last assessment.

The same limitations regarding the reliability of numbers apart from the total number of displaced people noted in the previous report are still relevant.

For this reason occupancy trends over time for the total number of persons is the most reliable estimate and is shown in Figure 1, as well as the gender breakdown.

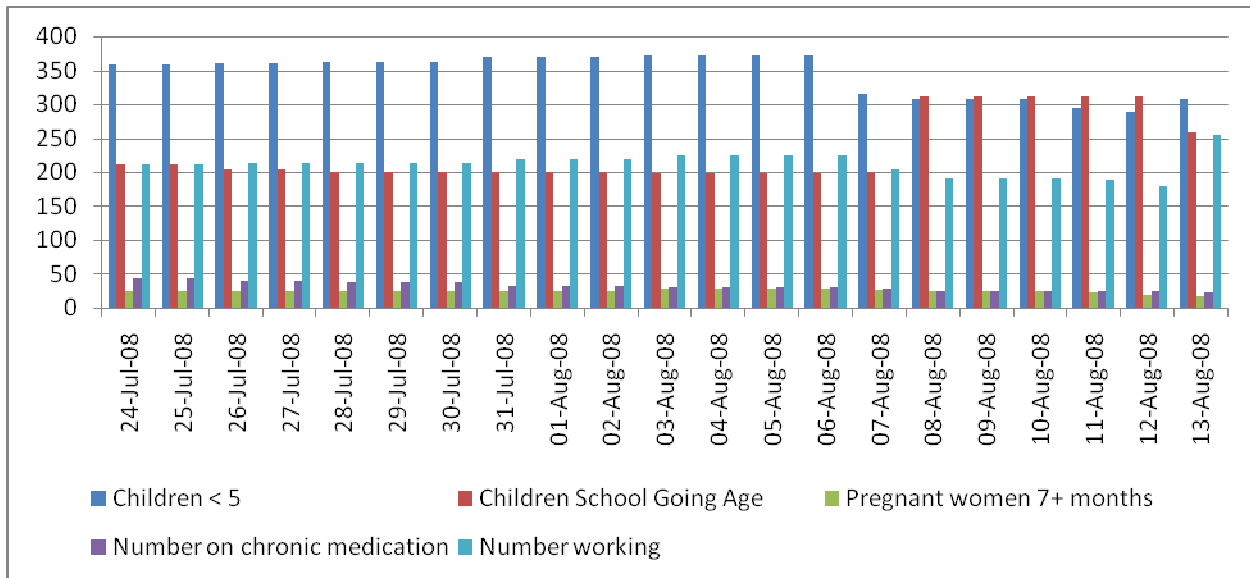


Figure 2 Population of exceptionally vulnerable persons housed in the 95 evaluated sites over time

The number of especially vulnerable persons is shown in Figure 2. The number of children aged less than 5 has decreased recently, however the number of children of school going age has increased. The reason for the increase in the number of children of school-going-age is unclear. The number of pregnant women has decreased over time as has the number of people on chronic medication. The number of people working varies from day to day at the sites since most work is part-time work. The number of people working has increased recently and may reflect an increase in the trust shown to site assessors around the issue of working (often illegally).

Number of Departures and Arrivals at Most Recent Follow-up (Tables 1.2, 1.2a and 1.2b)

Since the previous report there were 262 departures and 21 arrivals documented.

Table 1.2a shows that 162/291 departures left for their original community, 77 went to another community, six were repatriated and the details for 46 were unknown.

The new arrivals, tabulated in Table 1.2b, show that 42/52 came from another displaced person site, four came from their original community, and one from another community and information was either not collected or unknown for the remaining 5 arrivals.

In certain instances the data on arrivals and departures available from the sites was inadequate. At Daroo Islam Mosque there were 130 departures reported although there were only 22 males reported in occupancy. Similarly, at Norwood Methodist Church there were 19 departures although the occupancy

there was only 9. These data suggest that the total population previously reported may be an underestimate.

At large camps such as Harmony, data on arrivals and departures was not available. Similarly, at Soetwater a precise estimate for the site as a whole of the declining numbers was not possible but, for example, in the Somali tent, the number of persons had declined dramatically.

These data suggest that those IDPs departing are largely returning to their original community or to a lesser extent to another community. There are however still documented cases of new IDPs arriving, but given that many sites are not allowing new intakes, these data are difficult to collect (officially). The details of where IDPs are coming from are especially difficult to assess as shown in Table 1.2b.

At Blue Waters there are now 99 fewer people than at the previous assessment, although only 33 were documented as having left. At Masimbambane there are now 36 fewer people. For sites where the change in population was less than 30, please see Table 1.2b.

FOOD

Food Provision Distribution Information Derived From Follow-up (Table 1.3a)

At 66% of the recently assessed sites (21/32) food was deemed to be insufficient and at nine sites no regular food provider had yet been designated. However at two sites (Khayelitsha Site B Community Hall and Zolani Centre) a food provider has been designated since the last assessment.

At only seven sites were 3 meals provided each day while at 5 sites either no or one meal per day was provided.

At sixteen sites food supplements for children were not available or were thought to be insufficient. In the previous report the discontinuation of food supplements for children at Harmony was highlighted – since then food supplements for children continue to be neglected.

In the previous report, TAC was listed as a food provider for five sites; since the TAC no longer has funds to continue food provision other sources of food at these sites is urgently required.

SANITATION

Sanitation Information Derived from Follow-up (Table 1.4a)

At six sites sanitation norms (see SPHERE and TAC documents) in terms of ratios of IDPs per toilet are not being met; the worst affected sites include Zolani Centre and Tableview Liebrandt van Niekerk Hall where every 59 and 49 persons (respectively) had to share one toilet. Furthermore, at Youngsfield there was less than 1 washing facility for every 100 persons (see table for details).

At ten sites, separate toilet facilities were not available for men and women and at 14 sites separate washing facilities for men and women were also not available.

Nineteen sites did not have soap and at ten sites the toilets were not cleaned.

No significant changes were noted since the previous report; the main reason for the change in ratios is the declining numbers at camps and sites – not the improvement of services.

SHELTER

Shelter information derived from Follow-up (Table 1.5a)

At a number of sites (including Belhar Mosque, Harmony Strand, Youngsfield and Zolani Centre) shelter conditions had improved and are now considered adequate where previously they had been considered inadequate. At three camps, Blue Waters, Harmony and Soetwater, IDPs deemed their shelter to still be inadequate as their tents were leaking.

At seven sites there were no mattresses available while at a further two sites less than 15% of IDPs had mattresses. Blankets were not available at two sites.

Lighting in the sleeping areas, communal areas, female toilets and female baths had improved at a number of sites (Belhar Mosque, KTC Community Centre, Lower Crossroads, Saartjie Baartman Centre for Women

and Children, Silverstroom and Zolani Centre). However, at three sites lighting had deteriorated since the last report, there was now no lighting in the female baths at Blue Waters and Masimbambane or the communal area at Youngsfield. Electric lighting is still not available in sleeping areas at two sites, in communal areas at four sites, in female toilets at ten sites and female bathing areas at eleven sites.

At six sites families were not sheltered together.

Security had improved at a number of sites (Belhar Mosque, Harmony, KTC Community Centre, Lower Crossroads Hall, Saartjie Baartman Centre for Women and Children and Zolani Centre). However, at Blue Waters and Masimbambane security had worsened. Security remains poor with no security available at eight sites and at nine sites there was less than 24 hour security.

At the Solomon Mahlangu hall, where over two hundred people are housed, the roof was leaking.

HEALTH

Health Services from Follow-up (Table 1.6a)

Health care was refused to IDPs from Tableview Liebrandt van Niekerk Hall at Brooklyn clinic.

Transport to the nearest clinic was now offered at Belhar Mosque and both to and from the nearest clinic at Youngsfield, however transport to and from the nearest health clinic had been discontinued at Khayelitsha Site B Community Hall. Transport to the nearest health clinic was not available at eighteen sites while return transport was not available at twenty-one sites.

First aid kits had now been supplied to KTC Community Centre, Masimbambane, Silverstroom and Youngsfield. First aid kits were however still not available at fifteen sites including Blue Waters* and Harmony camps. [First aid kits arrived at Blue Waters on the 14th of August].

Cases of illness have worsened at a number of sites, which is shown in the table.

Health workers were now available at Harmony camp and others since the last assessment, but still only for limited hours or days each week.

NON FOOD ITEMS, EDUCATION AND SERVICES

Disposable Nappies, Sanitary Towels, Education and Other Services from Follow-up (Table 1.7)

The provision of disposable nappies had improved at some sites (either from nothing to insufficient or insufficient to sufficient supplies); these sites included KTC Community Centre, Khayelitsha Site B Community Hall, Lower Crossroads, Saartjie Baartman Centre for Women and Children and Youngsfield. But disposable nappies were still not available at eighteen sites and deemed insufficient at a further 6 sites.

Sanitary towel provision had improved at KTC Community Centre and Khayelitsha Site B but had been discontinued at Blue Waters and House in Parrow. Sanitary towels were still not available at eighteen sites and deemed insufficient at a further two sites.

Children were now able to attend school at Blue Waters and recreational activities were now available for children at Blue Waters and Khayelitsha Site B Community Hall but were discontinued at Saartjie Baartman Centre for Women and Children. Children were unable to attend school at eight sites and a further eleven sites did not have recreation facilities for children.

Advice and/or legal and/or information services were improved at Harmony Strand, Khayelitsha Site B, Lower Crossroads, Masimbambane, and Silverstroom (see table for details) but had deteriorated at Blue Waters, Masimbambane (in terms of information dissemination) and at Saartjie Baartman Centre for Women and Children. No advice centre, nor regular information dissemination, nor legal advice was available at the majority of sites.

INDIVIDUAL SITE CONDITIONS FOR CAMPS

BLUE WATERS

Health

The nearby clinic operates two days a week, for two hours, and has a nurse on site. It does not have a pharmacy, so patients who require medication must book with the site management to get transport to fetch them at the camp to take them to a clinic. This booking must be arranged a day in advance.

Some who have visited the nearby clinics in Strandfontein and Mitchell's Plain have had problems with nursing staff who do not take their concerns seriously. One incident involved a pregnant woman who was about to give birth and was nearly turned away.

Food

The food served at Bluewaters is one loaf of bread and three 250ml juice cartons per family for brunch, and half a loaf of bread and three juice cartons per single person. The juice is unmarked, with no expiry date, no list of ingredients and label on it. One hot meal of rice or pap is served in the evening with a mixed stew of cabbage/carrots/beans/meat bones/and, or potato. Many families have three or four small children and the lack of food has made some mothers keep their children from going to school as they fear their children will go hungry because there is not enough to give them to last the entire day. The fact that brunch is not served until noon also feeds into this problem.

Shelter

The lighting appears to have improved, and recent issues with power on site have been due to heightened electricity demand. In some areas where power is overloaded, it does not return for days. The site manager has requested government to install power lines that can hold a greater wattage. Outages are especially a problem at the ablution blocks.

No change has been made to provide additional or higher quality blankets. All residents have mattresses.

Half the residents at Bluewaters are housed in small chalets, roughly 5x6 square meters. The chalets are equipped with two bunk beds, a table and a sink with a tap. Up to 12 people stay in these chalets.

The tents house approximately 16 to 18 people. Like most tented sites, families do not have separate tents but put up blankets or sheets to cordon off an area for themselves within these structures. There is no ventilation in the tents, only a flap which acts as a door and which stays closed most of the time. Cooking in tents happens on the floor or on a makeshift raised surface on a two plate stove. This poses the danger of being a fire hazard. In addition, the tents are not sturdy, they sway in the wind and leak when there is heavy rain. The wind easily enters the tents on cold nights. There is usually only one light fitting in each tent.

Sanitation

Running water is widely available but there is limited, if any hot water as there is such a huge demand for it. Outside taps are located in central areas, and there is a central washing facility for clothes where there are two big steel basins for washing.

Some of the children at the camp are unable to use the toilets, as they are too big and inaccessible. Volunteers managed to buy two small potty training toilets, but due to the toilet hardships, and the shortage of training toilets, there are more children between 3 and 4 years using nappies than normal.

Residents are concerned that the city council workers who visit the camp to clean the toilets have ceased to clean them properly; they claim the council workers do not use chemicals to sanitize the toilets anymore. Residents also say that the toilets are only emptied once every five days, whereas camp management says the city council visits everyday to clean the site

No patrols or watch is kept outside toilets, and there have been incidences in the past where women have been accosted in the toilets. These actions have since stopped, but there is dense shrubbery close to the toilets that could pose a danger at night, as once a man jumped out from these and almost accosted a young girl. There is one ablution block located in a central area, but the other is much further away and most people do not use it.

Communication

The phone lines in the office and the public phones outside have not been in operation for at least three weeks now.

HARMONY PARK

Health

There is a health clinic nearby, but there is still no transportation to and from the clinic available to residents.

Food

The food at this site still remains insufficient. Recently, the ladies who cook for the children have had the pots that they cook with taken away and they have been left with a small pot, nobody has given them a reason why this has happened. The electricity in the kitchen where these women cook is also sporadically turns off.

Shelter

No improvements have been made to the tents, they are still leaking.

Sanitation

Though sanitation conditions remain adequate, there are still no separate facilities for men and women.

Communication

Problems with camp management and residents may be resolved now that the site manager has moved to another location.

YOUNGSFIELD

Health

Only the nurse and doctor assigned to the camp by the Department of Health have the keys to the medical supply cart in the medical clinic. The only additional medical supplies are received through donations. As a result, very limited medical supplies are accessible when the clinic is closed.

The doctor of the camp says that patients have reduced from approximately 45 a day to 25 and that only four cases of diarrhea have been reported during the last two months. Contrary to this report, in two days visiting the camp, site assessors received reports of five cases of diarrhea.

Food

On Wednesday July 23rd the site assessors detailed the food being served that day. The morning meal was served around 11:00am and consisted of two sandwiches made with brown or white bread (both were available) and one teaspoon of jam split between the two. Accompanying this was half a cup of tea and the weeks rationing of oranges. The evening meal was a small serving spoon of brown soup (a little under a cup) containing lentils and a very small amount of mutton with bones. Along with this they each received a cup of rice. This rice is often undercooked.

The small babies and toddlers have access to formulas and milk that are distributed in boxes to their mothers. Supplies have diminished quite drastically. Purity comprises the majority of the baby food inventory, however the children will not eat it. Parents remain uncertain about why the children do not like the Purity formula.

With no centralized area for children's food, children are now fed by their parents. Any extra food for the children is now being distributed throughout the camp. The inhabitants of the camp seem pleased with this situation, though there are still some people who do not have a stove themselves. Parents are now responsible for sanitizing bottles. There is some concern that families with children do not have stoves.

Shelter

New blankets were handed out by the Refugee Center since the last report was issued. These blankets are much improved from the last ones. Tents still remain inadequate and have not been reinforced to handle the winter weather.

Sanitation

The total number of toilets is still 25, with one locked and reserved for camp managers and police, leaving 24 toilets for 650-700 people (at least 27 people per toilet). The toilets are blue plastic portable toilets provided by Mshengu Toilet Hire. They are roughly 1.4m² and the seat inside is roughly 63cm high with a hole that is 30cm wide.

The seats on the toilets are too high for the children and the holes are too big so many are afraid to use them. This has led to many children urinating and defecating around the camp. The lack of lighting in the toilet area also contributes to the children's fear of using them.

There is also no lighting around any of the toilets, which has made a number of people afraid to use them at night. There are snakes in the area and many people are afraid of them, though they are non-venomous. There have been some reports of women having to arrange a male escort just to travel to the toilet at night.

The toilets are emptied once per day though the time varies. There have been a number of occasions where the time between cleanings is over twenty-four hours. The provision of toilet paper is sporadic and at present there is none. The taps are a good distance away from the toilets and as such there are no real facilities for washing hands.

Communication

There are still no modes of communication available to aid with job searches.

ACKNOWLEDGMENTS

Oxfam: Sponsorship

Henri Carrara, Analytical Epidemiologist:
Questionnaire Design, Summarising Data, Report
Compiling

Andy Duncan: Database design and programming

Helen Schneider: Questionnaire design

David Biles: Project Coordination

Gilad Isaacs: Project Coordination

Natasha Kallay: Project Coordination

Angela Forcier: Report compiling

Ali Davis: Site Assessment

Lynsey Bourke: Site Assessment

Simcelile Kalilashe: Site Assessment

Thulani Cekiso: Site Assessment

Antoinnette Engel: Site Assessment

Erin Barrar: Site Assessment

John Mario Arthur Antoni: Site Assessment

Oliver Human: Site Assessment

James Williams: Site Assessment

Tracey Saunders: Site Assessment

Lindiwe Knutson: Site Assessment

Vicki Igglesden: Site Assessment

Inge van Reenen: Site Assessment

Sergio Carciotto: Site Assessment

Lenin Gona: Database management

Hope Mwanjira: Database management

Geraldine Emegom: Database management

Stephanie Rogers: Database management

Shade group: Site Assessment

Warehouse group: Site Assessment

All the displaced people and other volunteers
who assisted in reporting on conditions in the
sites.

APPENDIX 1 TABULATIONS OF THE FOLLOW-UP DATA ACCORDING TO SITE

Table 1.1 Demographics

Location	Total	Male	Female	Pregnant	Babies <1	Children 1-5	School Going Age 6-18	Working	Chronic Medication	Source Head Count	Source Day Time	Updated
Belhar Mosque	4	4	0	0	0	0	0	3	0	No	No	2008/08/13
Blue Waters (Strandfontein)	463*	320	143	3	29	33	70	100	0	No	No	2008/08/13
Bonne Esperance Shelter for Refugee Women and Children	40	2	11	0	3	7	7	1	0	No	No	2008/08/08
Bridgetown Mosque	3	3	0	0	0	0	0	1	0	Yes	No	2008/08/07
Chrysalis	109	64	15	0	4	10	17	0	0	No	No	2008/08/13
Claremont Methodist Church	10	10	0	0	0	0	0	0	0	Yes	No	2008/07/29
Daroo Islam Mosque	22	22	0	0	0	0	0	0	0	Yes	No	2008/08/12
Desmond Tutu Hall Khayelitsha	0	0	0	0	0	0	0	0	0	No	No	2008/08/08
Harmony (Strand)	464	399	47	4	8	5	2	0	1	No	No	2008/08/13
Holy Trinity Church Gardens	0	0	0	0	0	0	0	0	0	No	No	2008/08/08
House in Parrow	15	11	4	0	1	0	0	14	0	No	No	2008/08/13
KTC Community Centre	72	39	33	1	0	4	1	0	0	No	No	2008/08/11
Khayelitsha Site B Community Hall	77	61	16	0	7	0	0	15	4	Yes	No	2008/08/07
Khayelitsha 7th Day Adventist Church	8	4	4	0	1	0	2	0	0	No	No	2008/08/11
Knysna	0	0	0	0	0	0	0	0	0	No	No	2008/08/08
Lentgeur Mosque	9	9	0	0	0	0	0	1	0	No	No	2008/08/13
Longstreet Artists	22	22	0	0	0	0	0	22	0	No	No	2008/08/13
Lower Crossroads Community Hall	23	21	2	0	1	1	0	0	0	No	No	2008/08/11
Lynn's House	0	0	0	0	0	0	0	0	0	No	No	2008/08/08
Masibambane	20	20	0	0	0	0	0	15	0	No	No	2008/08/12
Masjid Al Jaama Mosque	4	4	0	0	0	0	0	0	0	No	No	2008/08/13
Mr. M. Abrahams Mandalay House**	0	0	0	0	0	0	0	0	0	No	No	2008/08/08
Muizenberg All Saints Church	0	0	0	0	0	0	0	0	0	No	No	2008/08/01

Western Cape Displaced People Report

Location	Total	Male	Female	Pregnant	Babies <1	Children 1-5	School Going Age 6-18	Working	Chronic Medication	Source Head Count	Source Day Time	Updated
Muizenberg Office	48	14	10	0	2	6	16	0	1	Yes	No	2008/08/13
Norwood Methodist Church, Elsie's River	9	0	2	0	1	2	4	0	0	No	No	2008/08/11
Parow Methodist Church	23	13	10	0	2	6	5	5	0	No	No	2008/08/13
Pinelands Methodist Church	0	0	0	0	0	0	0	0	0	No	No	2008/08/08
Portlands Mosque	0	0	0	0	0	0	0	0	0	No	No	2008/08/08
Rondebosch East Mosque	8	8	0	0	0	0	0	0	0	No	No	2008/08/13
Rosebank Methodist	0	0	0	0	0	0	0	0	0	No	No	2008/08/08
Saartjie Baartman Centre for Women & Children	22	6	16	0	3	10	4	2	0	No	No	2008/08/07
Sereta Sports Centre	120	99	21	2	1	6	9	40	0	No	No	2008/08/11
Silverstroom (Atlantis)	88	29	20	0	1	14	24	4	0	No	No	2008/08/01
Soetwater (Kommetjie)	851	480	240	0	22	94	15	10	0	No	No	2008/07/13
Solomon Mahlangu	211	160	51	3	14	0	0	18	0	No	No	2008/08/07
Tableview Liebrant van Niekerk Hall	98	90	8	1	2	3	0	0	0	No	No	2008/08/01
Tennyson Mosque	0	0	0	0	0	0	0	0	0	No	No	2008/08/06
Thornton Methodist Church	0	0	0	0	0	0	0	0	0	No	No	2008/08/08
Woodstock Methodist Church Inner City Mission	2	2	0	0	0	0	0	0	0	No	No	2008/08/07
Youngsfield	620	340	146	0	16	42	74	0	8	No	No	2008/08/07
Zolani Centre	59	24	35	0	1	4	1	0	0	No	No	2008/08/11
7th Day Church	0	0	0	0	0	0	0	0	0	No	No	2008/07/11
Africa Family Group Help Mission	42	15	15	0	unknown	12	unknown	unknown	0	No	No	2008/07/03
Andile Msizi Hall - Khayelitsha	0	0	0	0	unknown	0	0	0	0	No	No	2008/07/10
Beautiful Gates	0	.	.	.	unknown	.	unknown	unknown	.	.	.	
Bellville Refugee Centre	0	0	0	0	unknown	0	unknown	unknown	0	Yes	No	2008/06/23
Bellville Methodist Church	0	.	.	.	unknown	.	unknown	unknown	.	.	.	
Bergvliet Methodist Church	0	0	0	0	unknown	0	unknown	unknown	0	No	No	2008/06/25
Bo Kaap Yellow Mosque	0	.	.	.	unknown	.	unknown	unknown	.	.	.	

Western Cape Displaced People Report

Location	Total	Male	Female	Pregnant	Babies <1	Children 1-5	School Going Age 6-18	Working	Chronic Medication	Source Head Count	Source Day Time	Updated
Bothasig Hall	65	61	4	1	unknown	4	0	0	1	No	No	2008/07/09
Christ Church Kenilworth	0	0	0	0	unknown	0	unknown	unknown	0	Yes	No	2008/06/30
Christ our King Revival Church	50	17	25	0	unknown	8	unknown	unknown	0	No	No	2008/07/02
Church Without Walls	0	0	0	0	unknown	0	unknown	unknown	0	Yes	No	2008/06/25
Church of Christ Khayelitsha Site B	0	0	0	0	unknown	0	unknown	unknown	0	No	No	2008/06/24
Church of God - Lotus River	17	8	9	0	1	2	2	0	0	Yes	No	2008/07/13
Edgemead Methodist Church	0	.	.	.	unknown	.	unknown	unknown	.	.	.	
Evergreat Bible Church - Summergreens	0	0	0	0	unknown	0	unknown	unknown	0	Yes	No	2008/06/25
Foreshore	200	0	0	0	0	0	0	0	0	Yes	No	2008/07/14
Full Gospel Church Somerset West	0	0	0	0	unknown	0	0	0	0	No	No	2008/07/10
God's Family Church	0	0	0	0	unknown	0	unknown	unknown	0	No	No	2008/06/24
Goodwood Methodist Church	0	.	.	.	unknown	.	unknown	unknown	.	.	.	
Goodwood Presbyterian Church	60	30	19	0	unknown	8	unknown	unknown	1	No	No	2008/07/01
Grassy Park Methodist Church	0	0	0	0	0	0	0	0	0	No	No	2008/07/13
His People Church	0	0	0	0	unknown	0	0	0	0	No	No	2008/07/10
Home of Hope-West Coast Depot, Tableview Association of God	0	.	.	.	unknown	.	unknown	unknown	.	.	.	
House in Matieland	0	.	.	.	unknown	.	unknown	unknown	.	.	.	
Hout Bay Church International	0	.	.	.	unknown	.	unknown	unknown	.	.	.	2008/06/02
Ikamva Youth Centre	0	.	.	.	unknown	.	unknown	unknown	.	.	.	
Lighthouse Church	0	0	0	0	unknown	0	0	0	0	No	No	2008/07/08
Lighthouse Parrow	0	.	.	.	unknown	.	unknown	unknown	.	.	.	
Lotus River Methodist	0	0	0	0	0	0	0	0	0	No	No	2008/07/13
Masjid Ur. Rahman	0	.	.	.	unknown	.	unknown	unknown	.	.	.	
Mbekweni, Antoniesvlei	0	.	.	.	unknown	.	unknown	unknown	.	.	.	
Meadowridge Baptist Church	0	0	0	0	0	0	0	0	0	No	No	2008/07/14
Methodist Church, Belhar	0	0	0	0	unknown	0	unknown	unknown	0	Yes	No	2008/06/25

Western Cape Displaced People Report

Location	Total	Male	Female	Pregnant	Babies <1	Children 1-5	School Going Age 6-18	Working	Chronic Medication	Source Head Count	Source Day Time	Updated
Mowbray Mosque	0	.	.	.	unknown	.	unknown	unknown	.	.	.	
Muizenberg Community	20	19	1	0	0	0	0	0	0	No	No	2008/07/13
New Orleans Park	12	6	6	0	unknown	0	0	2	0	No	No	2008/07/08
Observatory Methodist Church	0	0	0	0	unknown	0	unknown	unknown	0	No	No	2008/07/02
Paren Christian Ministeries	25	9	7	0	2	3	4	1	1	No	No	2008/07/13
Pinelands Baptist Church	0	.	.	.	unknown	.	unknown	unknown	.	.	.	
Presbyterian Church	0	.	.	.	unknown	.	unknown	unknown	.	.	.	
Resource Centre	0	0	0	0	unknown	0	unknown	unknown	0	No	No	2008/07/01
Richwood	122	76	46	1	unknown	14	unknown	unknown	4	Yes	No	2008/07/01
Rondebosch United Church	0	0	0	0	unknown	0	0	0	0	No	No	2008/07/09
Salvation Army	0	0	0	0	unknown	0	unknown	unknown	0	No	No	2008/06/25
Scotsdene Youth Centre	0	0	0	0	unknown	0	unknown	unknown	0	No	No	2008/06/25
St Johns Church Wynberg	0	0	0	0	unknown	0	0	0	0	No	No	2008/07/10
Summer Greens	220	175	35	1	unknown	10	unknown	unknown	1	No	No	2008/06/30
Universal Evangelical Church	4	1	2	0	1	0	0	0	0	Yes	No	2008/07/17
Uyesu Nathi Church, Khayelitsha	0	0	0	0	unknown	0	unknown	unknown	0	No	No	2008/06/24
Valley Church	0	.	.	.	unknown	.	unknown	unknown	.	.	.	
Way of Life Church	0	0	0	0	unknown	0	0	0	0	No	No	2008/07/10
Woodlands Mosque	0	.	.	.	unknown	.	unknown	unknown	.	.	.	
Wynberg Methodist Church	0	0	0	0	0	0	0	0	0	No	No	2008/07/14
Total	4361	2697	1003	17	123	308	257	254	22			

*At Blue Waters as of the 14th there were now 430 IDPs, but the gender breakdown was not available

**At Mr M Mandalay House the IDPs had taken over the lease of the property and so are now considered self sufficient

Table 1.2 Demographic change at most recent follow-up

Location	Total	Male	Female	Departures Total	Arrivals Total	Source Head Count	Source Day Time	Source Somebody Told Me
Belhar Mosque	4	4	0	2	0	No	No	Yes
Blue Waters (Strandfontein)	463	320	143	33	0	No	No	Yes
Bonne Esperance Shelter for Refugee Women and Children	40	2	11	4		No	No	Yes
Bridgetown Mosque	3	3	0	0	0	Yes	No	No
Chrysalis	109	64	15	2	31	No	No	Yes
Claremont Methodist Church	10	10	0	0	0	Yes	No	No
Daroo Islam Mosque	22	22	0	130	0	No	No	Yes
Desmond Tutu Hall Khayelitsha	0	0	0	0	0	No	No	Yes
Harmony (Strand)	464	399	47			No	No	No
Holy Trinity Church Gardens	0	0	0	1	0	No	No	Yes
House in Parrow	15	11	4	0	0	No	No	Yes
KTC Community Centre	72	39	33	0	0	No	No	Yes
Khayelitsha Site B Community Hall	77	61	16	0	0	Yes	No	No
Khayelitsha 7th Day Adventist Church	8	4	4	0	0	No	No	Yes
Knysna	0	0	0			No	No	Yes
Lentgeur Mosque	9	9	0	3	0	No	No	Yes
Longstreet Artists	22	22	0	0	5	No	No	Yes
Lower Crossroads Community Hall	23	21	2	0	0	No	No	Yes
Masibambane	20	20	0	11	0	Yes	No	Yes
Masjid Al Jaama Mosque	4	4	0	6	0	No	No	Yes
Meadowridge Baptist Church	0	0	0	23		No	No	No
Mr. M. Abrahams Mandalay House**	0	0	0	3	1	No	No	Yes
Muizenberg All Saints Church	0	0	0	0	0	No	No	Yes
Muizenberg Office	48	14	10	0		No	No	No
Norwood Methodist Church, Elsies River	9	1	2	19	0	No	No	Yes
Parow Methodist Church	23	13	10	0		Yes	No	No
Pinelands Methodist Church	0	0	0	0	0	Yes	No	No

Western Cape Displaced People Report

Location	Total	Male	Female	Departures Total	Arrivals Total	Source Head Count	Source Day Time	Source Somebody Told Me
Portlands Mosque	0	0	0	4	0	No	No	Yes
Rondebosch East Mosque	8	8	0	0	0	No	No	Yes
Rosebank Methodist	0	0	0	5	0	Yes	No	No
Saartjie Baartman Centre for Women & Children	22	6	16	1	0	Yes	No	Yes
Sereta Sports Centre	120	99	21	0	0	No	No	Yes
Silverstroom (Atlantis)	88	29	20	6	0	No	No	Yes
Soetwater (Kommetjie)	851	480	240		14	No	No	Yes
Solomon Mahlangu	211	160	51	25	0	No	No	Yes
Tableview Liebrant van Niekerk Hall	98	90	8	0	0	No	No	Yes
Tennyson Mosque	0	0	0	3	1	No	No	Yes
Thornton Methodist Church	0	0	0	1	0	Yes	No	No
Woodstock Methodist Church Inner City Mission	2	2	0	9	0	No	No	Yes
Youngsfield	618	340	146	0	Unknown	No	No	Yes
Zolani Centre	59	24	35	0	0	No	No	Yes
Total	3522	2281	834	291	52			

Notes: The number of departures and arrivals was not always been accurately recorded by the sites owing to the difficulties in enumerating this very mobile population

**At Mr M Mandalay House the IDPs had taken over the lease of the property and so are now considered self sufficient

Table 1.2a Departures and their destinations

Location	Departures Total	Departures Original Community	Departures Another Community	Departures Another IDP Site	Departures Repatriation	Departures Other	Departures Unknown
Belhar Mosque	2	0	2	0	0	0	0
Blue Waters (Strandfontein)	33	0	0	0	0	0	33
Bonne Esperance Shelter for Refugee Women and Children	4	.	4
Bridgetown Mosque	0	0	0	0	0	0	0
Chrysalis	2	0	0	0	0	2	.
Claremont Methodist Church	0	0	0	0	0	0	0
Daroo Islam Mosque	130	130	.	0	0	0	0
Desmond Tutu Hall Khayelitsha	0	0	0	0	0	0	0
Harmony (Strand)
Holy Trinity Church Gardens	1	0	1	0	0	0	0
House in Parrow	0
KTC Community Centre	0	0	0	0	0	0	0
Khayelitsha Site B Community Hall	0	0	0	0	0	0	0
Khayelitsha 7th Day Adventist Church	0	0	0	0	0	0	0
Knysna
Lentgeur Mosque	3	0	3	0	0	0	0
Longstreet Artists	0	0	0	0	0	0	0
Lower Crossroads Community Hall	0	0	0	0	0	0	0
Masibambane	11	0	11	0	0	0	0
Masjid Al Jaama Mosque	6	0	6	0	0	0	0
Meadowridge Baptist Church	23	23
Mr. M. Abrahams Mandalay House**	3	0	0	0	0	0	3
Muizenberg All Saints Church	0	0	0	0	0	0	.
Muizenberg Office	0	0	0	0	0	0	.
Norwood Methodist Church, Elsies River	19	0	19	0	0	0	0
Parow Methodist Church	0	0	0	0	0	0	0

Western Cape Displaced People Report

Location	Departures Total	Departures Original Community	Departures Another Community	Departures Another IDP Site	Departures Repatriation	Departures Other	Departures Unknown
Pinelands Methodist Church	0	0	0	0	0	0	0
Portlands Mosque	4	0	0	0	0	0	4
Rondebosch East Mosque	0
Rosebank Methodist	5	0	5	0	0	0	0
Saartjie Baartman Centre for Women & Children	1	0	1	0	0	0	0
Sereta Sports Centre	0	0	0	0	0	0	0
Silverstroom (Atlantis)	6	.	.	.	6	.	.
Soetwater (Kommetjie)
Solomon Mahlangu	25	0	25	0	0	0	0
Tableview Liebrant van Niekerk Hall	0
Tennyson Mosque	3	3
Thornton Methodist Church	1	0	0	0	0	0	1
Woodstock Methodist Church Inner City Mission	9	9	0	0	0	0	0
Youngsfield	0	0	0	0	0	0	.
Zolani Centre	0	0	0	0	0	0	0
Total	291	162	77	0	6	2	44

**At Mr M Mandalay House the IDPs had taken over the lease of the property and so are now considered self sufficient

Table 1.2b Arrivals and their origins

Location	Arrivals Total	Arrivals Another IDP Site	Arrivals Original Community	Arrivals Another Community	Arrivals Unknown	Arrivals Other
Belhar Mosque	0	0	0	0	0	0
Blue Waters (Strandfontein)	0	0	0	0	0	0
Bonne Esperance Shelter for Refugee Women and Children
Bridgetown Mosque	0	0	0	0	0	0
Chrysalis	31	31	0	0	.	0
Claremont Methodist Church	0	0	0	0	0	0
Daroo Islam Mosque	0	0	0	0	0	0
Desmond Tutu Hall Khayelitsha	0	0	0	0	0	0
Harmony (Strand)
Holy Trinity Church Gardens	0	0	0	0	0	0
House in Parrow	0
KTC Community Centre	0	0	0	0	0	0
Khayelitsha Site B Community Hall	0	0	0	0	0	0
Khayelitsha 7th Day Adventist Church	0	0	0	0	0	0
Knysna
Lentgeur Mosque	0	0	0	0	0	0
Longstreet Artists	5	0	0	0	.	5
Lower Crossroads Community Hall	0	0	0	0	0	0
Masibambane	0	0	0	0	0	0
Masjid Al Jaama Mosque	0	0	0	0	0	0
Meadowridge Baptist Church
Mr. M. Abrahams Mandalay House**	1	0	1	0	0	0
Muizenberg All Saints Church	0	0	0	0	.	0
Muizenberg Office
Norwood Methodist Church, Elsies River	0	0	0	0	0	0
Parow Methodist Church	.	0	0	0	0	0
Pinelands Methodist Church	0	0	0	0	0	0

Western Cape Displaced People Report

Location	Arrivals Total	Arrivals Another IDP Site	Arrivals Original Community	Arrivals Another Community	Arrivals Unknown	Arrivals Other
Portlands Mosque	0	0	0	0	0	0
Rondebosch East Mosque	0					
Rosebank Methodist	0	0	0	0	0	0
Saartjie Baartman Centre for Women & Children	0	0	0	0	0	0
Sereta Sports Centre	0	0	0	0	0	0
Silverstroom (Atlantis)	0					
Soetwater (Kommetjie)	14	11	2	1		
Solomon Mahlangu	0	0	0	0	0	0
Tableview Liebrant van Niekerk Hall	0					
Tennyson Mosque	1		1			
Thornton Methodist Church	0	0	0	0	0	0
Woodstock Methodist Church Inner City Mission	0	0	0	0	0	0
Youngsfield						
Zolani Centre	0	0	0	0	0	0
Total	52	42	4	1	0	5

**At Mr M Mandalay House the IDPs had taken over the lease of the property and so are now considered self sufficient

Table 1.3a Food Provision – Follow-up baseline

Location	Food sufficient	Regular Provider Designated	Number of meals provided each day						Food Provider Other Who	Meals Per Day	Milk Supplements Children	Milk Supp Frequency	Milk Supp Method
			Food Provider HDI	Food Provider Mustadafin	Food Provider SANZAF	Food Provider Salvation Army	Food Provider Red Cross	Food Provider Other					
Belhar Mosque	No	Yes	0	1	0	0	0	1	community	2	N/A		
Blue Waters (Strandfontein)	Yes	Yes	0	2	0	0	0	0		2	insufficient	3	Bottles
Bonne Esperance Shelter for Refugee Women and Children	No	Yes	3	Catholic Welfare	3	sufficient	.	Cups
Bridgetown Mosque	Yes	Yes	.	.	2	.	.	0	community sometimes	2	N/A		
Chrysalis	No	Yes	2	.		2	none		
Claremont Methodist Church	Yes	No	mosque committee & community	3	N/A		
Daroo Islam Mosque	No	No	0	0	0	0	0	0	community	.	N/A		
Harmony (Strand)	No	Yes		2	none		
House in Parrow	No	No	TAC	.	none		
KTC Community Centre	No	Yes	2	0	0	0	0	0		2	insufficient	0	Cups
Khayelitsha Site B Community Hall	Yes	Yes	3	0	0	0	0	1	TAC - once a week	3	none		
Khayelitsha 7th Day Adventist Church	Yes	No	0	3	0	0	0	1	TAC	3	insufficient	3	Bottles
Lentgeur Mosque	Yes	Yes	0	2	0	0	0	0		2	N/A		
Longstreet Artists	No	No	N/A		
Lower Crossroads Community Hall	No	Yes	2	0	0	0	0	0		2	insufficient	.	Cups
Masibambane	Yes	Yes	0	0	0	0	0	3	TAC - once a	3	N/A		

Location	Food sufficient	Regular Provider Designated	Number of meals provided each day						Food Provider Other Who	Meals Per Day	Milk Supplements Children	Milk Supp Frequency	Milk Supp Method
			Food Provider HDI	Food Provider Mustadafin	Food Provider SANZAF	Food Provider Salvation Army	Food Provider Red Cross	Food Provider Other					
									week				
Masjid Al Jaama Mosque	Yes	Yes	Mosque Committee	3	N/A		
Muizenberg Office	No	Yes	.	1		1	sufficient	Cups	
Norwood Methodist Church, Elsies River	Yes	Yes	2	0	0	0	0	0		2	sufficient	2 Bottles	
Parow Methodist Church	No	Yes	2		2	sufficient	3 Bottles	
Rondebosch East Mosque	No	Yes	.	1		1	N/A		
Saartjie Baartman Centre for Women & Children	No	No	0	0	0	0	0	0		0	insufficient	2 Bottles	
Sereta Sports Centre	Yes	Yes	2	0	0	0	0	0	not given	2	sufficient	4 Bottles	
Silverstroom (Atlantis)	No	Yes	2	.		2	none		
Soetwater (Kommetjie)	No	Yes	.	2		2	none		
Solomon Mahlangu	Yes	Yes	0	3	0	0	0	1	TAC - once a week	3	sufficient	3 Bottles	
Tableview Liebrant van Niekerk Hall	No	Yes	Disaster Management	1	none		
Woodstock Methodist Church Inner City Mission	No	No	0	0	0	0	3	0	church	.	N/A		
Youngsfield	No	Yes	.	.	2	.	.	.		2	insufficient	Bottles	
Zolani Centre	No	Yes	2		2	none		
The following sites are no longer occupied													
Desmond Tutu Hall Khayelitsha	none		
Holy Trinity Church Gardens	none		
Knysna	No	Yes	0	.		.	none		
Lynn's House													

Location	Food sufficient	Regular Provider Designated	Number of meals provided each day						Food Provider Other Who	Meals Per Day	Milk Supplements Children	Milk Supp Frequency	Milk Supp Method
			Food Provider HDI	Food Provider Mustadafin	Food Provider SANZAF	Food Provider Salvation Army	Food Provider Red Cross	Food Provider Other					
Mr. M. Abrahams Mandalay House	Yes	Yes	0	1	1	0	0	1	TAC	3	sufficient	0	Bottles
Muizenberg All Saints Church	none	.	.
Pinelands Methodist Church	No	No	church & TAC	2	none	.	.
Portlands Mosque	No	No	Disaster Management	1	none	.	.
Rosebank Methodist	Yes	Yes	2	2	none	.	.
Tennyson Mosque	Yes	Yes	.	1	.	.	.	2	TAC	3	sufficient	.	Bottles
Thornton Methodist Church	No	No	donations / pap & beans	1	none	.	.

Table 1.4a Sanitation – Follow-up baseline

Location	Soap	Number Toilets Total	Number Flush Toilets	Number Chemical Toilets	Number Toilets Other	Separate Toilets For Men And Women	Ratio of People to Toilets	Toilets Cleaned	Number Baths	Number Showers	Number Basins	Ratio of people to washing facilities	Ratio of people to basins	Washing Separate for Men and Women
Belhar Mosque	Yes	3	3	0	.	Yes	1.3	Yes	0	1	1	4.0	4.0	N/A
Blue Waters (Strandfontein)	No	48	11	37	.	Yes	9.0	Yes	0	8	7	53.7	66.1	TRUE
Bonne Esperance Shelter for Refugee Women and Children	Yes	Yes	.	Yes	FALSE
Bridgetown Mosque	Yes	6	6	0	.	.	0.5	No	.	2	.	.	.	FALSE
Chrysalis	No	4	4	0	.	Yes	27.3	No	0	3	4	36.3	27.3	TRUE
Claremont Methodist Church	Yes	4	4	0	.	Yes	2.5	Yes	0	1	4	10.0	2.5	TRUE
Daroo Islam Mosque	Yes	10	10	0	.	No	2.2	No	0	4	0	5.5	.	FALSE
Harmony (Strand)	No	.	24	70	.	Yes	4.9	Yes	0	24	.	19.3	.	TRUE
House in Parrow	No	.	2	.	.	No	7.5	Yes	1	FALSE
KTC Community Centre	No	14	4	10	.	Yes	5.1	Yes	0	6	6	12.0	12.0	TRUE
Khayelitsha Site B Community Hall	No	10	0	10	.	No	7.7	Yes	0	0	30	.	2.6	FALSE
Khayelitsha 7th Day Adventist Church	Yes	4	4	0	.	No	2.0	Yes	0	0	1	.	8.0	TRUE
Lentgeur Mosque	Yes	5	5	0	.	Yes	1.8	Yes	0	1	5	9.0	1.8	TRUE
Longstreet Artists	No	No	.	No	FALSE
Lower Crossroads Community Hall	No	17	7	10	.	Yes	1.4	Yes	0	2	0	11.5	.	TRUE
Masibambane	No	10	10	0	.	Yes	2.0	Yes	0	0	8	.	2.5	FALSE
Masjid Al Jaama Mosque	Yes	3	3	0	.	Yes	1.3	Yes	0	2	4	2.0	1.0	TRUE
Meadowridge Baptist Church	No	No	.	No	FALSE
Muizenberg Office	No	2	2	0	.	No	24.0	No	0	1	4	48.0	12.0	FALSE
Norwood Methodist Church, Elsies River	Yes	5	5	0	.	Yes	1.8	Yes	1	1	5	4.5	1.8	TRUE
Parow Methodist Church	Yes	3	3	0	.	Yes	7.7	Yes	0	0	3	.	7.7	TRUE
Rondebosch East Mosque	Yes	8	8	.	.	Yes	1.0	Yes	.	2	2	.	4.0	TRUE

Location	Soap	Number Toilets Total	Number Flush Toilets	Number Chemical Toilets	Number Toilets Other	Separate Toilets For Men And Women	Ratio of People to Toilets	Toilets Cleaned	Number Baths	Number Showers	Number Basins	Ratio of people to washing facilities	Ratio of people to basins	Washing Separate for Men and Women
Saartjie Baartman Centre for Women & Children	No	2	2	0	.	Yes	11.0	No	0	2	0	11.0	.	FALSE
Sereta Sports Centre	No	45	20	25	.	Yes	2.7	Yes	0	4	12	30.0	10.0	TRUE
Silverstroom (Atlantis)	No	.	12	0	.	Yes	.	Yes	1	9	.	8.8	.	TRUE
Soetwater (Kommetjie)	Yes	No	.	Yes	FALSE
Solomon Mahlangu	No	18	8	10	.	Yes	11.7	Yes	0	8	60	26.4	3.5	TRUE
Tableview Liebrant van Niekerk Hall	No	2	2	.	.	Yes	49.0	No	.	1	.	.	.	FALSE
Woodstock Methodist Church Inner City Mission	No	1	1	0	.	.	2.0	Yes	0	1	0	2.0	.	FALSE
Youngsfield	No	.	.	25	.	No	25.0	No	0	6	3	103.0	208.0	FALSE
Zolani Centre	No	.	1	.	.	No	59.0	Yes	0	1	0	59.0	.	N/A
The following sites are longer occupied														
Desmond Tutu Hall Khayelitsha	No	FALSE
Holy Trinity Church Gardens	No	FALSE
Knysna	No	.	1	.	.	No	.	No	.	1	.	.	.	FALSE
Lynn's House
Mr. M. Abrahams Mandalay House	Yes	5	5	0	.	No	0.0	Yes	0	1	0	0.0	.	FALSE
Pinelands Methodist Church	Yes	4	4	0	.	Yes	0.0	Yes	0	0	4	.	0.0	FALSE
Portlands Mosque	Yes	2	2	0	.	Yes	0.0	No	0	1	2	0.0	0.0	TRUE
Rosebank Methodist	No	2	2	0	.	Yes	0.0	Yes	0	0	0	.	.	TRUE
Tennyson Mosque	Yes	5	5	0	.	No	0.0	Yes	0	1	0	0.0	.	FALSE
Thornton Methodist Church	No	2	2	0	.	Yes	0.0	Yes	0	0	4	.	0.0	TRUE

*At Youngsfield there are 3 urinals that are not counted in the number of toilets, also there are 6 taps without basins that are not factored into ratio calculations

Table 1.5a Shelter conditions – Follow-up baseline

Location	Shelter Adequate	Tents Number	Tents Size	Tents People Per	Tents Leak	Families Sheltered Together	Bedding Mattresses	Bedding Blankets	Electric Lighting Sleeping	Electric Lighting Communal	Lighting Female Toilets	Lighting Female Baths	Security
Belhar Mosque	Yes	0	0	0	N/A	N/A	0	100	Yes	Yes	.	.	LessThan24Hours
Blue Waters (Strandfontein)	Yes	.	.	.	TRUE	FALSE	90	100	Yes	Yes	No	No	LessThan24Hours
Bonne Esperance Shelter for Refugee Women and Children	Yes	.	.	.	N/A	N/A	0	0	Yes	Yes	Yes	Yes	24Hours
Bridgetown Mosque	Yes	0	0	0	N/A	N/A	100	100	Yes	Yes	.	.	24Hours
Chrysalis	Yes	.	.	.	N/A	N/A	100	100	Yes	Yes	Yes	Yes	24Hours
Claremont Methodist Church	Yes	.	.	0	N/A	N/A	0	100	Yes	Yes	No	No	24Hours
Daroo Islam Mosque	Yes	0	0	0	N/A	N/A	0	0	Yes	No	No	No	LessThan24Hours
Harmony (Strand)	Yes	.	.	.	TRUE	N/A	15	100	Yes	Yes	Yes	Yes	24Hours
House in Parrow	Yes	.	.	.	N/A	N/A	60	60	Yes	Yes	No	No	None
KTC Community Centre	Yes	.	.	.	N/A	N/A	84	84	Yes	Yes	Yes	Yes	24Hours
Khayelitsha Site B Community Hall	Yes	0	0	0	FALSE	FALSE	100	70	Yes	Yes	No	No	None
Khayeltsha 7th Day Adventist Church	Yes	.	.	.	FALSE	FALSE	100	80	Yes	Yes	Yes	Yes	None
Lentgeur Mosque	Yes	0	0	0	N/A	N/A	0	100	Yes	Yes	Yes	Yes	LessThan24Hours
Longstreet Artists	No	.	.	.	N/A	N/A	.	.	No	No	No	No	None
Lower Crossroads Community Hall	Yes	0	0	0	FALSE	TRUE	100	100	Yes	Yes	Yes	Yes	24Hours
Masibambane	Yes	0	0	0	FALSE	FALSE	100	100	Yes	Yes	Yes	No	LessThan24Hours
Masjid Al Jaama Mosque	No	.	.	.	N/A	N/A	0	100	Yes	Yes	Yes	Yes	LessThan24Hours
Meadowridge Baptist Church	No	.	.	.	N/A	N/A	.	.	No	No	No	No	None
Muizenberg All Saints Church	No	No	
Muizenberg Office	Yes	.	.	.	N/A	N/A	75	100	Yes	Yes	No	No	None
Norwood Methodist Church, Elsie's River	Yes	0	0	0	N/A	N/A	100	100	Yes	Yes	Yes	Yes	None
Parow Methodist Church	Yes	.	.	.	N/A	N/A	100	95	Yes	Yes	Yes	Yes	24Hours
Rondebosch East Mosque	Yes	.	.	.	N/A	N/A	0	100	Yes	Yes	Yes	Yes	None

Location	Shelter Adequate	Tents Number	Tents Size	Tents People Per	Tents Leak	Families Sheltered Together	Bedding Mattresses	Bedding Blankets	Electric Lighting Sleeping	Electric Lighting Communal	Lighting Female Toilets	Lighting Female Baths	Security
Saartjie Baartman Centre for Women & Children	Yes	.	.	.	N/A	N/A	100	100	Yes	Yes	Yes	Yes	24Hours
Sereta Sports Centre	Yes	.	.	.	N/A	N/A	70	100	Yes	Yes	Yes	Yes	LessThan24Hours
Silverstroom (Atlantis)	Yes	.	.	.	FALSE	FALSE	100	100	Yes	Yes	Yes	Yes	24Hours
Soetwater (Kommetjie)	Yes	.	.	20	TRUE	TRUE	100	97	Yes	Yes	Yes	Yes	24Hours
Solomon Mahlangu	Yes	.	.	.	FALSE	FALSE	80	80	Yes	Yes	Yes	Yes	LessThan24Hours
Tableview Liebrant van Niekerk Hall	Yes	.	.	.	N/A	N/A	60	60	Yes	Yes	No	No	24Hours
Woodstock Methodist Church Inner City Mission	Yes	0	0	.	N/A	N/A	100	100	Yes	Yes	Yes	Yes	24Hours
Youngsfield	Yes	46	105	25	N/A	N/A	80	95	Yes	No	No	No	24Hours
Zolani Centre	Yes	.	.	.	N/A	N/A	100	100	Yes	Yes	Yes	Yes	24Hours
The following sites are no longer occupied													
Desmond Tutu Hall Khayelitsha	No	No	
Holy Trinity Church Gardens	No	No	
Knysna	Yes	.	.	.	N/A	N/A	100	100	Yes	Yes	No	No	24Hours
Lynn's House	
Mr. M. Abrahams Mandalay House	Yes	.	.	.	N/A	N/A	100	100	Yes	Yes	No	No	24Hours
Pinelands Methodist Church	Yes	0	0	0	N/A	N/A	100	100	Yes	Yes	Yes	Yes	24Hours
Portlands Mosque	Yes	.	.	.	N/A	N/A	10	100	Yes	Yes	Yes	Yes	LessThan24Hours
Rosebank Methodist	Yes	0	0	0	N/A	N/A	100	95	Yes	Yes	No	No	24Hours
Tennyson Mosque	Yes	.	.	.	N/A	N/A	100	100	Yes	Yes	No	No	24Hours
Thornton Methodist Church	Yes	0	0	0	N/A	N/A	99	85	Yes	Yes	Yes	Yes	24Hours

Table 1.6a Health – Follow-up baseline

Location	Distance To Nearest Health Facility (km)	Health Care Refused	Health Care Refused Clinic	Health Transport To	Health Transport From	First Aid Kit	Diarrhoea	Fever	Rash	Cough	Health Worker	Health Worker Hours	Health Worker Days
Belhar Mosque	5	No		Yes	No	No	No	No	Yes	No	No		
Blue Waters (Strandfontein)	0	No		Yes	Yes	No*Now Yes	No	No	No	Yes	Yes	1	2
Bonne Esperance Shelter for Refugee Women and Children	.	No		Yes	Yes	Yes	No		
Bridgetown Mosque	1	No		No	No	No	No	No	No	No	No		
Chrysalis	1	No		Yes	Yes	Yes	No	No	No	No	Yes	4	7
Claremont Methodist Church	1	No		No	No	Yes	No	No	No	No	No		
Daroo Islam Mosque	1	No		Yes	Yes	No	No	No	No	No	No		
Harmony (Strand)	1	No		No	No	No	Yes		2
House in Parrow	.	No		No	No	No	No	No	No	No	No		
KTC Community Centre	1	No		No	No	Yes	No	No	No	15	No		
Khayelitsha Site B Community Hall	0	No		No	No	Yes	No	No	No	10	Yes	2	3
Khayelitsha 7th Day Adventist Church	1	No		Yes	Yes	Yes	Yes	No	No	No	No	0	0
Lentgeur Mosque	2	No		Yes	Yes	No	No	No	3	No	No		
Longstreet Artists	.	No		No	No	No	No		
Lower Crossroads Community Hall	1	No		No	No	No	No	No	No	No	No		
Masibambane	1	No		Yes	Yes	Yes	No	No	No	10	Yes	2	1
Masjid Al Jaama Mosque	1	No		No	No	No	No	No	No	No	No		
Meadowridge Baptist Church	.	No		No	No	No	No		
Muizenberg All Saints Church		
Muizenberg Office	5	No		No	No	No	No	No	No	No	No		
Norwood Methodist Church, Elsie's River	200m	No		No	No	No	No	No	No	No	No		
Parow Methodist Church	200m	No		Yes	No	No	No	No	No	No	No		
Rondebosch East Mosque	0	No		No	No	Yes	No	No	No	No	No	2	3

Western Cape Displaced People Report

Location	Distance To Nearest Health Facility (km)	Health Care Refused	Health Care Refused Clinic	Health Transport To	Health Transport From	First Aid Kit	Diarrhoea	Fever	Rash	Cough	Health Worker	Health Worker Hours	Health Worker Days
Saartjie Baartman Centre for Women & Children	1	No		Yes	Yes	Yes	No	No	No	No	No		
Sereta Sports Centre	2	No		No	No	No	No	No	No	No	No	0	0
Silverstroom (Atlantis)	14	No		Yes	Yes	Yes	No	No	No	No	Yes	2	4
Soetwater (Kommetjie)	7	No		Yes	No	Yes	Yes	1	5
Solomon Mahlangu	1	No		Yes	Yes	Yes	No	No	No	No	No	3	2
Tableview Liebrant van Niekerk Hall	1	Yes	Brooklyn	No	No	No	15	30	20	No	No		
Woodstock Methodist Church Inner City Mission	2	No		No	No	Yes	No	No	No	No	No	0	0
Youngsfield	0	No		Yes	Yes	Yes	3	.	.	2	Yes	2	5
Zolani Centre	1	No		No	No	No	No	No	No	No	No		
Desmond Tutu Hall Khayelitsha		
Holy Trinity Church Gardens		
Knysna	0	No		No	No	No	No		
Lynn's House													
Mr. M. Abrahams Mandalay House	1	No		Yes	Yes	Yes	3	No	No	3	Yes	0	2
Pinelands Methodist Church	500m	No		Yes	No	No	No	No	No	No	No		
Portlands Mosque	0	No		Yes	Yes	No	No	No	No	No	No		
Rosebank Methodist	5	No		Yes	Yes	No	No	No	Yes	No	No		
Tennyson Mosque	1	No		Yes	Yes	Yes	2	No	No	.	Yes		2
Thornton Methodist Church	10	Yes	maitland clinic	Yes	No	No	No	No	No	Yes	Yes	30	1

*On 14 August first aid kits arrived at Blue Waters

Table 1.7b Non Food Items and Other Services – Baseline Follow-up

Location	Disposable Nappies Available	Sanitary Towels Available	Non Food Other	Children Attend School	Recreational Activities Children	Advice Centre	Regular Information Dissemination	Legal Assistance
Belhar Mosque	N/A	N/A	none	N/A	N/A	No	No	No
Blue Waters (Strandfontein)	insufficient	none	none	TRUE	TRUE	No	No	Yes
Bonne Esperance Shelter for Refugee Women and Children	sufficient	sufficient	none	FALSE	TRUE	No	Yes	No
Bridgetown Mosque	N/A	N/A	none	N/A	N/A	No	No	No
Chrysalis	none	none	none	TRUE	TRUE	No	No	No
Claremont Methodist Church	none	none	none	N/A	N/A	No	No	No
Daroo Islam Mosque	none	none	none	N/A	N/A	No	No	No
Harmony (Strand)	none	none	none	FALSE	FALSE	Yes	Yes	Yes
House in Parrow	none	none	none	N/A	N/A	No	No	No
KTC Community Centre	insufficient	insufficient	none	TRUE	TRUE	No	Yes	No
Khayelitsha Site B Community Hall	sufficient	sufficient	none	N/A	TRUE	No	Yes	Yes
Khayeltsha 7th Day Adventist Church	none	none	none	TRUE	FALSE	No	No	Yes
Lentgeur Mosque	none	sufficient	none	N/A	N/A	Yes	Yes	Yes
Longstreet Artists	none	N/A	none	N/A	N/A	No	No	No
Lower Crossroads Community Hall	insufficient		N/A	N/A	N/A	No	Yes	No
Masibambane	none	N/A	none	N/A	N/A	Yes	No	Yes
Masjid Al Jaama Mosque	sufficient	N/A	none	N/A	N/A	No	No	No
Meadowridge Baptist Church	none	none	none	N/A	N/A	No	No	No
Muizenberg All Saints Church	none	none	none			.	.	.
Muizenberg Office	insufficient	none	none	FALSE	FALSE	No	No	No
Norwood Methodist Church, Elsie's River	sufficient	sufficient	none	TRUE	FALSE	No	Yes	Yes
Parow Methodist Church	sufficient	sufficient	none	FALSE	FALSE	No	No	No
Rondebosch East Mosque	N/A	N/A	none	N/A	N/A	No	No	No

Location	Disposable Nappies Available ¹	Sanitary Towels Available	Non Food Other	Children Attend School	Recreational Activities Children	Advice Centre	Regular Information Dissemination	Legal Assistance
Saartjie Baartman Centre for Women & Children	sufficient	none	none	TRUE	FALSE	No	No	No
Sereta Sports Centre	insufficient	sufficient	none	FALSE	FALSE	No	Yes	No
Silverstroom (Atlantis)	none	none	none	FALSE	FALSE	Yes	Yes	Yes
Soetwater (Kommetjie)	sufficient	sufficient	none	FALSE	TRUE	No	No	No
Solomon Mahlangu	sufficient	sufficient	none	N/A	FALSE	Yes	No	Yes
Tableview Liebrant van Niekerk Hall	none	none	none	N/A	FALSE	No	No	No
Woodstock Methodist Church Inner City Mission	none	N/A	none	N/A	N/A	Yes	Yes	Yes
Youngsfield	insufficient	none	none	TRUE	FALSE	No	No	No
Zolani Centre	none	none	none	N/A	N/A	No	No	No
Desmond Tutu Hall Khayelitsha	none	none	none			.	.	.
Holy Trinity Church Gardens	none	none	none			.	.	.
Knysna	none	none	none	N/A	N/A	No	No	No
Lynn's House								
Mr. M. Abrahams Mandalay House	sufficient	none	sufficient	TRUE	FALSE	Yes	Yes	Yes
Pinelands Methodist Church	none	sufficient	none	TRUE	N/A	No	Yes	Yes
Portlands Mosque	sufficient	sufficient	none	N/A	TRUE	No	No	No
Rosebank Methodist	none	none	none	N/A	N/A	No	No	No
Tennyson Mosque	sufficient	sufficient	none	TRUE	FALSE	Yes	Yes	Yes
Thornton Methodist Church	none	sufficient	none	FALSE	FALSE	No	No	No